



LELY COMPEDES Rubber Flooring

innovations in agriculture

ROTARY MATS

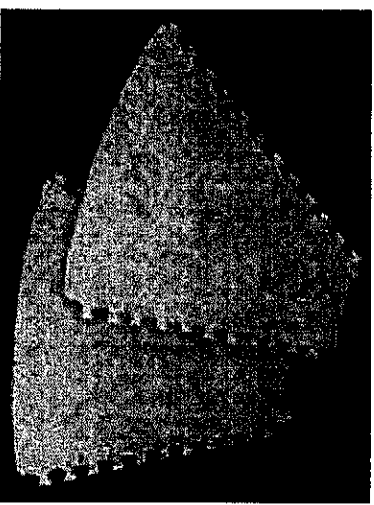
This product is designed specifically for rotary platforms.

Suitable applications:

- Rotary platforms, renovation or new
- Circular horse training installation
- Any other round areas

Size and Weight:

- ☞ Tailor cut wedge shape mats 18 mm thick
- ☞ Weight: 20 kg per sqm or ~30 kg per mat depending on the cut size



Compound: ComfyGrip 100% natural rubber

- ☞ Consistent compound without inferior recycling crumbs or reinforcement fabric
- ☞ Soft for comfort and very abrasion resistant
- ☞ Will bounce back again and again
- ☞ Highest possible resilience and durability
- ☞ Non absorbent, urine and UV resistant for outdoor installations
- ☞ Easy to cut with standard snap blade knife
- ☞ Non-stick surface, hammer top surface finish

Interlocking long sides

- ☞ Tight bond between mats
- ☞ No kicking up of edges
- ☞ Very limited anchoring required

Drainage: 5 mm ribs lengthwise

- ☞ Extra cushion under weight of animals





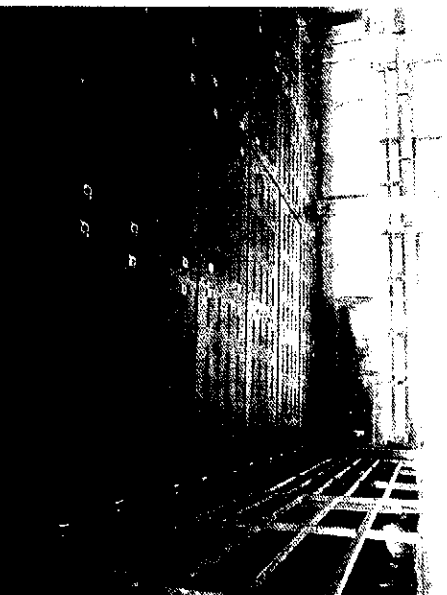
Innovators in agriculture™

COMPEDES Rubber Flooring

COWS LOVE THE MAT SOLUTION

Firstly cows are more sure-footed and confident when moving on this surface, which replicates natural pasture in terms of grip and give. This relieves stress on the animals leading to improved production and helps to avoid injuries in cow traffic areas. The resulting improved traction is superior to grooved and spalled concrete surfaces. The non-slip nature of the surface also virtually eliminates injury due to slips and stumbles by cows or operators. Because of the give in the surface, lameness and hoof injury are also dramatically reduced. This also delivers both improved production and reduced animal health bills.

This advanced matting is designed to stay in place and to avoid edges kicking up due to a smart interlocking system. Compedes® can be custom designed for slatted shed floors. Compedes® is made from recycled truck tyres re-vulcanised in a special process. That gives the matting a durability and softness similar to truck tyres for a long life on the farm. Individual mats give the user the flexibility to fit it into every application. The mats can be cut with a jigsaw if necessary. Only a few anchors are required to hold the mats in place. The easy installation makes it possible to fit Compedes® in a dairy between milkings. Rubber in cow traffic areas has the benefit of easy cleaning. Nothing does stick to the surface like on concrete



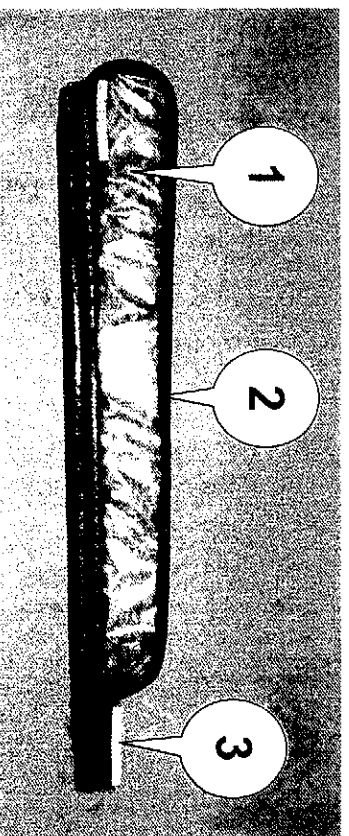
Compedes slatted mats with the following specifications:

Size: 4' x 6' x 3/4", 180 x 120 x 1.8 cm or smaller tailor cut to provided slatted floor blue print.

Weight: 32 kg

Interlocks: 1 or 2 sides

For anchors as pictured we recommend 3 per mat



Cow Mattress

Cow Comfort: That's the current buzzword in modern stall design - and no wonder! Nobody wants to lie on something that's not comfortable, animals included.

Easy to roll out and install yourself:

1. 50 mm foam mat (1.2 m x 1.8m) for 30mm cushion
2. 4 mm rubber cover, supplied in rolls (2.05m x 50m x 4mm = 465kg)
3. Plastic strips to hold it down



innovators in agriculture

COMPEDES Rubber Flooring

This product is designed for best possible traction, animal comfort, easy DIY installation and good moisture drainage.

Suitable applications:

- Dairy entrance, exit, milking area, dairy yard
- Loading ramps
- Truck and trailer decks
- Horse stables
- Human anti-fatigue surface

COMPEDES

1 = 3' X 4' Dairy Mats

1 Pallet of 30 Mats (approx 30m²)

Size and Weight per mat

3' x 4' x 3/4" (≈ 117 cm x 88 cm x 1.8 cm); 21 kg

2 = Rotary Mats

1 Rotary Mat

Product tailor cut to suit customer's rotary dairy platform

How to measure a rotary platform:

1. Measure the outer diameter (OD) on at least two different places in millimeters (mm).
2. Multiply OD with Pi (3.142) to get the circumference and divide this by 1180 mm. The result rounded up to the next number is the required number of mats.
3. To process the order we will need both inner and outer diameter of the donut.

Example for a typical 60 unit rotary with an OD of 16000 mm: 16000mm x 3.142 = 50272mm divided by 1180mm = 42.6 means 43 mats are required

Availability : lead time ≈ 10 weeks

3 = Closed Seam Floor

1 Roll 4' x 110' x 3/4" (≈ 122 cm x 33.53 m x 1.8 cm)

1 Roll 3' x 110' x 3/4" (≈ 92 cm x 33.53 cm x 1.8 cm)

3a= Heavy duty lock strips 8' long (≈ 243 cm)

Availability : lead time ≈ 10 weeks + 2 weeks

Bulk buying discounts apply

4 = Sale Yard Floor

10 Rolls 4' x 30' (10mm thick)

Other lengths and thicknesses are also available on request

Availability : lead time ≈ 10 weeks

5 = Fixing material

Fixing nails as pictured per 100PC

≈ means approximate



Live Life Lely

LELY NEW ZEALAND LTD



LELY COMPEDES Rubber Flooring

innovations in agriculture

SALE YARD FLOOR

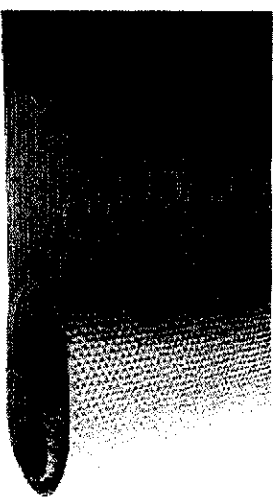
This product is designed as an economical alternative to create a non-slip surface with good animal comfort to prevent injuries and to reduce stress levels.

Suitable applications:

- Sale yard pens

Size and Weight:

- 4' x 30' x 10 mm ~ 120 kg per roll
- (~ 122 cm x 914.4 cm x 1.0 cm)
- Other lengths and thicknesses available on request
- Easy and quick installation of long narrow alleyways or yards



Compound: ComfyGrip 100% natural rubber

- Consistent compound without inferior recycling crumbs or reinforcement fabric
- Soft for comfort and very abrasion resistant
- Will bounce back again and again
- Highest possible resilience and durability
- Non absorbent, urine and UV resistant for outdoor installations
- Easy to cut with standard snap blade knife
- Non-stick surface, hammer top surface finish
- **Drainage:** 2 mm ribs lengthwise
- Extra cushion under weight of animals





LELY COMPEDES Rubber Flooring

innovators in agriculture

CLOSED SEAM FLOOR

This product is designed for easy installation and best possible bonding of the floor.

Suitable applications:

- Freestall barns
- Dairy yards

Size and Weight:

- 👉 4' x 110' x 3/4" (~ 122 cm x 3353 cm x 1.8 cm); 880 kg per roll
- 👉 3' x 110' x 3/4" (~ 92 cm x 3353 cm x 1.8 cm); 660 kg per roll
- 👉 Easy and quick installation of long narrow alleyways or yards



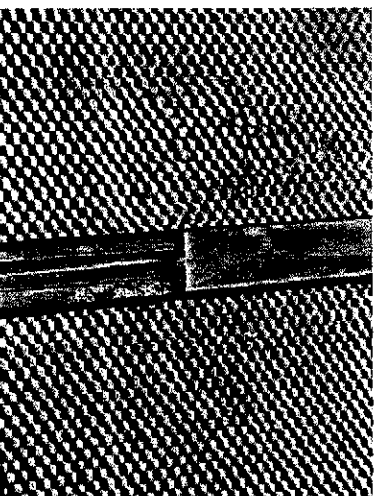
Compound: ComfyGrip 100% natural rubber

- 👉 Consistent compound without inferior recycling crumbs or reinforcement fabric
- 👉 Soft for comfort and very abrasion resistant
- 👉 Will bounce back again and again
- 👉 Highest possible resilience and durability
- 👉 Non absorbent, urine and UV resistant for outdoor installations
- 👉 Easy to cut with standard snap blade knife
- 👉 Non-stick surface, hammer top surface finish



Closed seam connection:

- 👉 Tight bond between rolls with heavy duty clipping system
- 👉 No kicking up of edges
- 👉 Very limited anchoring required
- 👉 Suitable for vehicle traffic like bobcats
- **Drainage:** 5 mm grooves lengthwise
 - 👉 Good drainage in every direction
 - 👉 Extra cushion under weight of animals





LELY COMPEDES Rubber Flooring

Innovators in agriculture

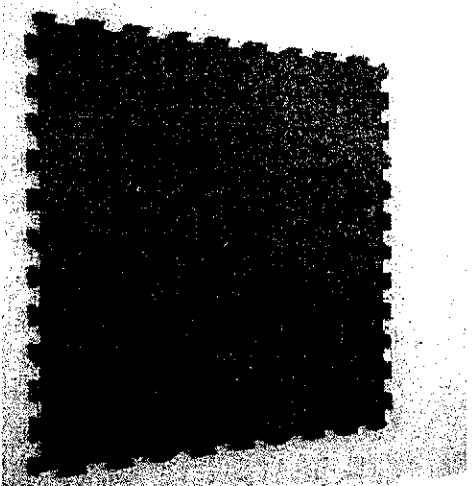
3' X 4' DAIRY MAT

This product is designed for best possible traction, animal comfort, easy DIY installation and good moisture drainage.

Suitable applications:

- Dairy entrance, exit, milking area, dairy yard
- Loading ramps
- Truck and trailer decks
- Horse stables
- Washing and grooming areas
- Human anti-fatigue surface

- **Size and Weight:** 3' x 4' x 3/4"
(~ 122 cm x 92 cm x 1.8 cm); 22 kg
 - 👉 Easy to carry by one person
 - 👉 Less off-cuts and waste because of small size mat



- **Compound:** Comfy Grip 100% natural rubber
 - 👉 Consistent compound without inferior recycling crumbs or reinforcement fabric
 - 👉 Soft for comfort and very abrasion resistant
 - 👉 Will bounce back again and again
 - 👉 Highest possible resilience and durability
 - 👉 Non absorbent, urine and UV resistant for outdoor installations
 - 👉 Easy to cut with standard snap blade knife
 - 👉 Non-stick surface, grain style surface finish
- **Smart interlock:** short and long side connect together
 - 👉 Tight bond between mats
 - 👉 No kicking up of edges
 - 👉 Very limited anchoring required
 - 👉 Less waste and off cut
- **Drainage:** special geometric cavities on the underside
 - 👉 Good drainage in every direction
 - 👉 Extra cushion under weight of animals and also improves non slip in difficult conditions with a lot of dirt

